



# Ministry of Health Uganda

## Weekly Epidemiological Bulletin

### Highlights of the week

Cholera outbreak in Busia and Mbale Districts

### Summary Table

Indicator	Week 48 2015	Week 49 2015
% Districts	99	<b>99</b>
Ave % HU	72.1	<b>66.5</b>
% Timely reports	*	*
AFP	17(0)	<b>4 (0)</b>
Animal bites	323(0)	<b>257 (0)</b>
Cholera	17 (0)	<b>39 (0)</b>
Dysentery	853 (0)	<b>1188(1)</b>
Guinea Worm	1(0)	<b>0</b>
Malaria	186,018 (51)	<b>143,792 (38)</b>
Measles	172 (0)	<b>128 (0)</b>
Meningitis	7 (1)	<b>6 (1)</b>
NNT	2 (0)	<b>0</b>
Plague	(1) 0	<b>0</b>
Typhoid	1876 (0)	<b>1298 (0)</b>
MDR TB	15(1)	<b>4(1)</b>

\*Indicator not provided

### Completeness of Reporting

In week 49, 111 districts reported (except Buvuma) with average completeness of 66.5% which indicated a small decline of 5.6% from week 48. A total of 29 districts achieved the national target of  $\geq 80\%$  of the health facilities reporting rate. Kyegegwa, Buliisa, Dokolo, Amolatar, Moyo, Koboko, Maracha, Nebbi, Yumbe, Zombo districts had 100% completeness. Lyantonde, and Buvuma districts had less than 20% reporting facilities. The regional level performance as well as best districts and worst districts in week 49 have been presented in **Figure 1 & Figure 2**.

### Epidemiological week 49 (30th Nov - 06th Dec 2015)

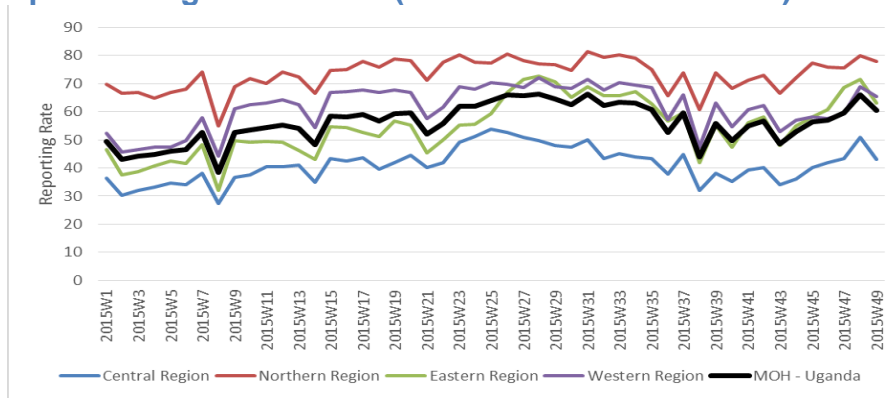


Figure 1: Average reporting level by region for weeks 1-49, 2015

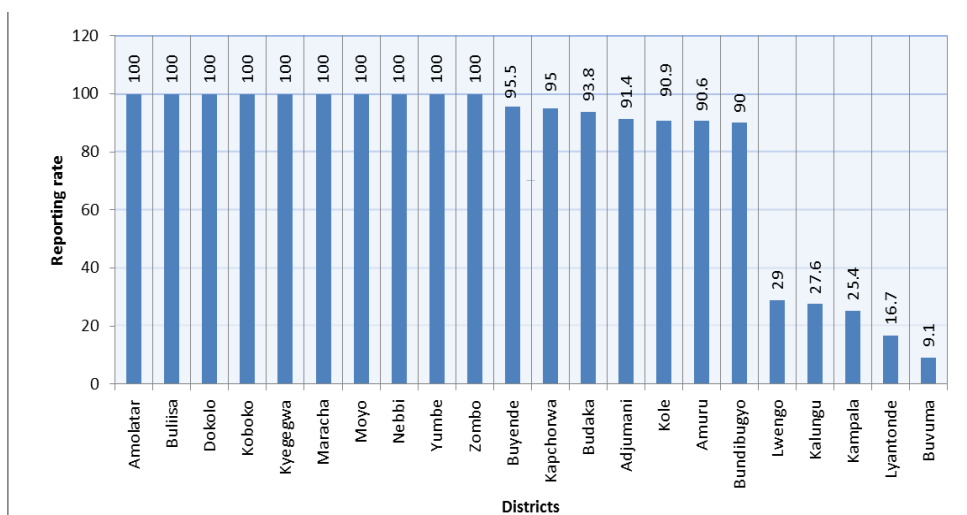


Figure 2: Percent reporting rate (completeness) of the best ( $\geq 80\%$ ) and worst performing districts in week 49

### Disease Outbreaks

#### Cholera outbreak in Busia District

The number of cases is increasing, despite of the control efforts instituted by the district level authorities. By 14<sup>th</sup> December, a total of 197 cases (2 deaths) had been recorded, mainly from Busia Municipality (**Figure 3**). The age range is from 1-65 years and 23 cases aged 0-4 years have been managed.

**Actions:** The national Rapid Response Team has been in the district training health workers on using the case definitions, identify cases and manage them appropriately. The District Task Force is actively engaged in control efforts.

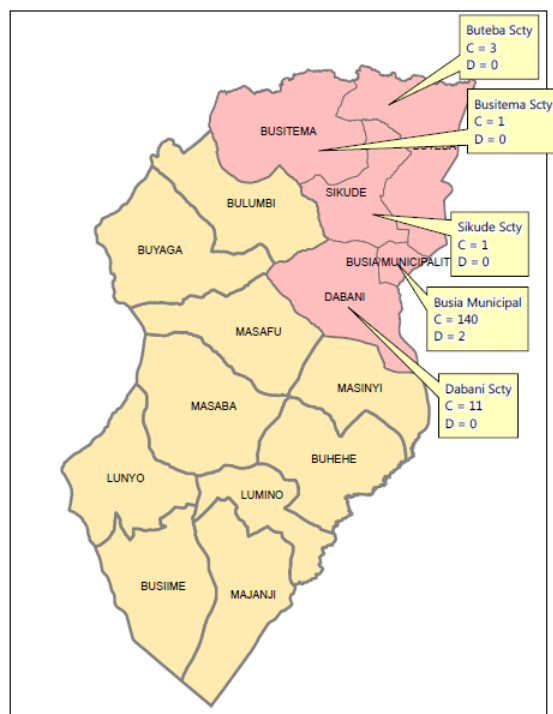


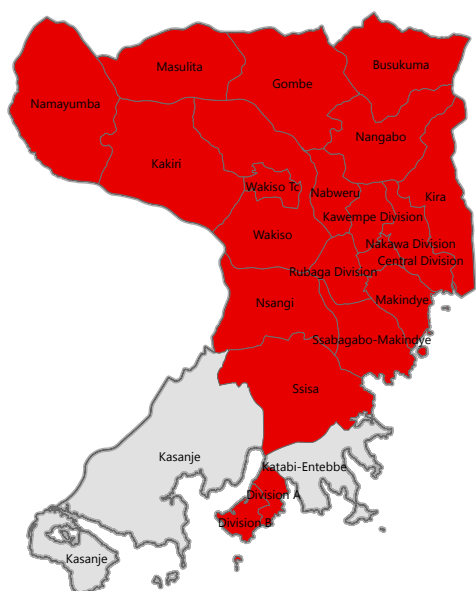
Figure 3: Map of Busia District showing the number of cholera cases by division/sub-county, by 9th December 2015

### Cholera outbreak in Kampala District

The outbreak started on 20th October in Makindye Division (Bukasa, Kanyogoga zones) and later spread to Rubaga Division (Kisenyi zone). The number of cases in Kampala have continued, affecting mostly Makindye, Central and Rubaga divisions (**Figure 4**). A total of 206 cases and 3 deaths (CFR 1.5%) have been treated/recorded and more males (112 – 54% are affected compared to 94 females (46%). A summary of the situation by 16th December is presented in **Table 1**.

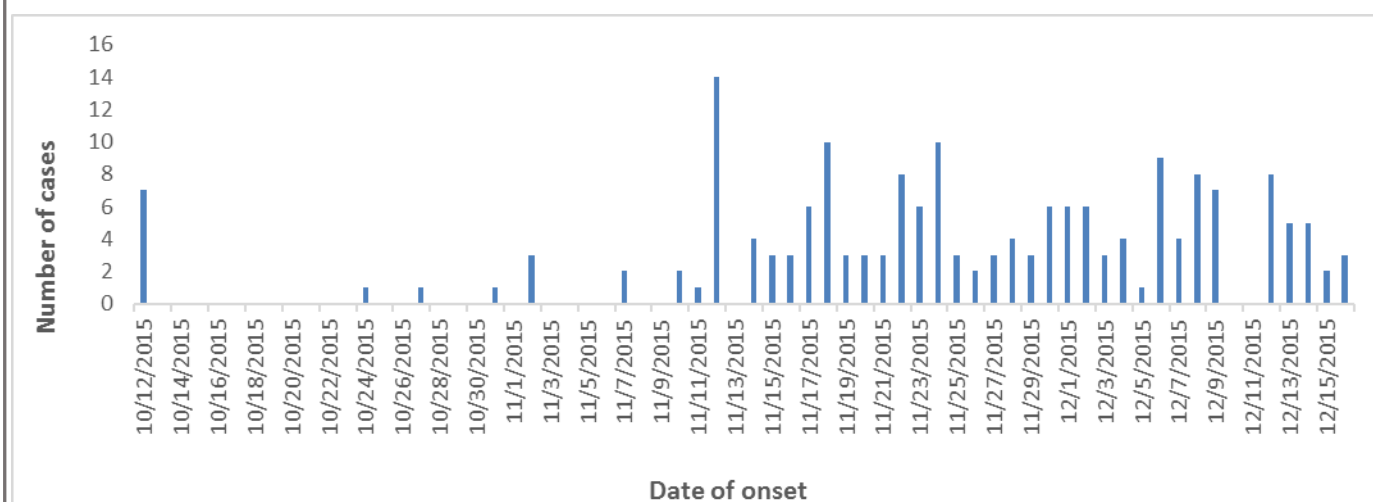
Table 1: Summary of the Cholera outbreak situation in Kampala District, October to December 16th 2015

No	Summary of cases	Total Number
1	New suspect cases today	7
2	New deaths	0
3	Cumulative cases (probable & confirmed cases)	206
4	Cumulative deaths (probable & confirmed cases) in <ul style="list-style-type: none"> <li>• <b>Health Facilities</b></li> <li>• <b>Community</b></li> </ul>	4 (3 community deaths , 1 Hospital death)
5	Total number of cases on admission	16 (12 in Mulago, 1 in Naguru)
6	Cummulative cases discharged	182
7	Current admissions of Health Care Workers	0
8	Cummulative cases of Health Care Workers	0
9	Cummulative deaths of Health Care Workers	0
10	Specimens collected and sent to CPHL today	6
11	Cumulative specimens collected	179
12	Cummulative cases with lab. confirmation (acute)	37
	Cummulative cases with lab. confirmation (convalescent)	0
13	Date of admission of last confirmed case	12 <sup>th</sup> December, 2015
14	Date of discharge of last confirmed case	15 <sup>th</sup> December ,2015
15	Confirmed cases that have died	0



**Figure 4: Map of Kampala and Wakiso districts showing the distribution of cholera cases by 16th December 2015**

The epidemic curve indicates a slight and gradual decline in number of cases (**Figure 5**).



**Figure 5: Epidemic curve of cholera outbreak in Kampala district, 12th October to 16th December 2015**

**Actions:** The National Task Force has been actively meeting thrice a week; and supporting Kampala Capital City Authority health division to control the outbreak. MOH and partners have supported water chlorination at household level using aquatablets; soap and water for hand washing in public places and in vulnerable communities in the affected zones, stand pipes with treated water and general patient care. The social mobilisation team deployed film vans which are providing health education to the affected communities.

### **Mbale District Cholera outbreak**

There is a confirmed cholera outbreak in Mbale district with a cumulative of 18 cases by 15 December 2015. The contamination of the water channel from Busia is indicated as the source of the outbreak. Heavy rains, coupled with blocked drainage channels have been highlighted as the influencing factors.

In Hoima Municipality, another outbreak of cholera has been confirmed, two months after an outbreak in rural Hoima. Similar efforts to control these outbreaks have been deployed.

**Malaria:** Reported Malaria cases remain high with a gradual decrease from 186,018 cases and 51 deaths reported in week 48 compared to 143,792 cases and 38 deaths in week 49. The case fatality rate remains at 0.03% in both weeks. The cases in the epidemic districts in Northern Uganda remain above the respective Malaria normal channels except for Arua district (**Figure 6**) that started lowering to the expected cases since week 48 (see figures below). In week 49, Gulu district (**Figure 7**) reported the highest number of cases (5903),

followed by Nebbi (4460) and Kasese (4149) districts.

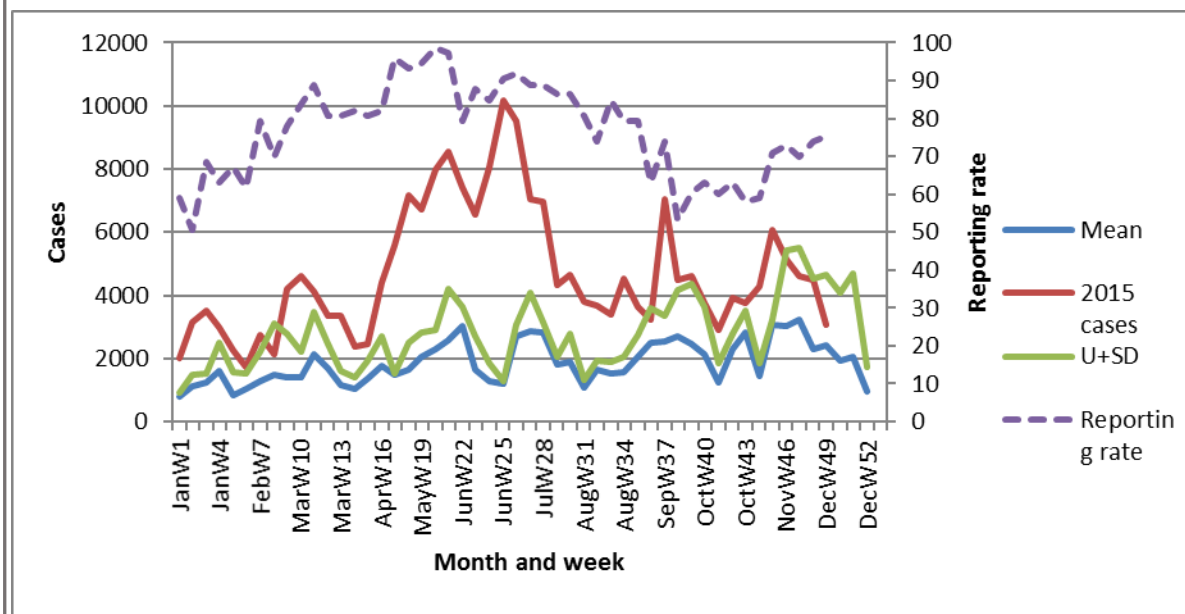


Figure 6: Malaria cases, normal channel and reporting rates for Arua district for week 49

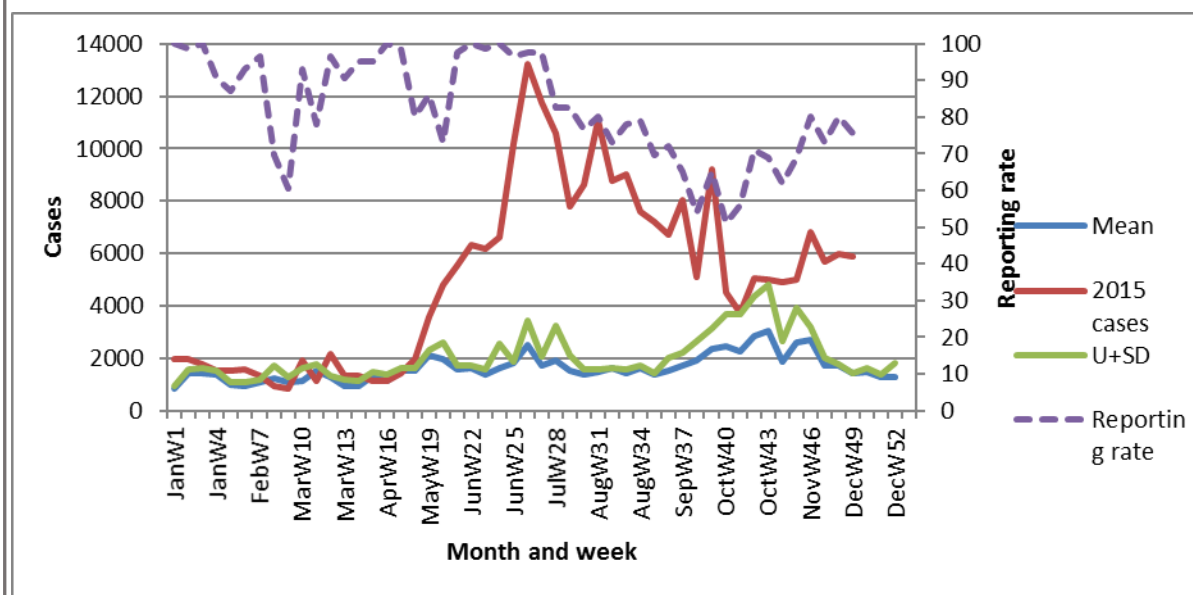
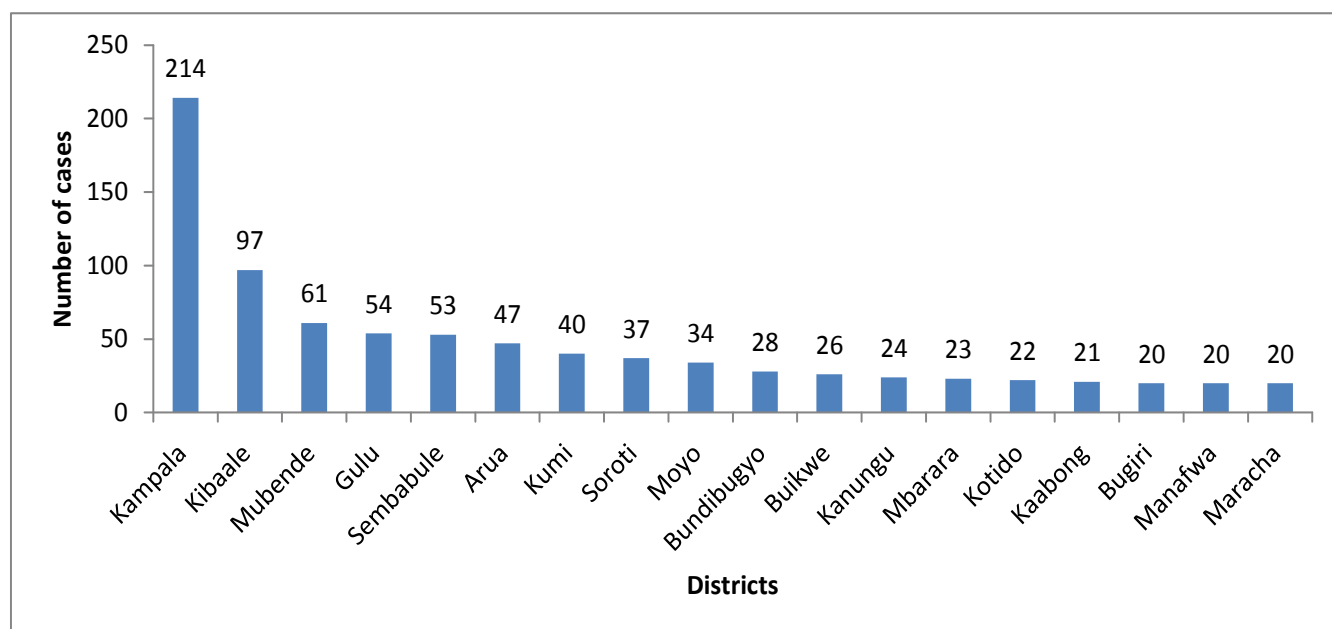


Figure 7: Malaria cases, normal channel and reporting rates for Gulu district for week 49

### Other priority diseases

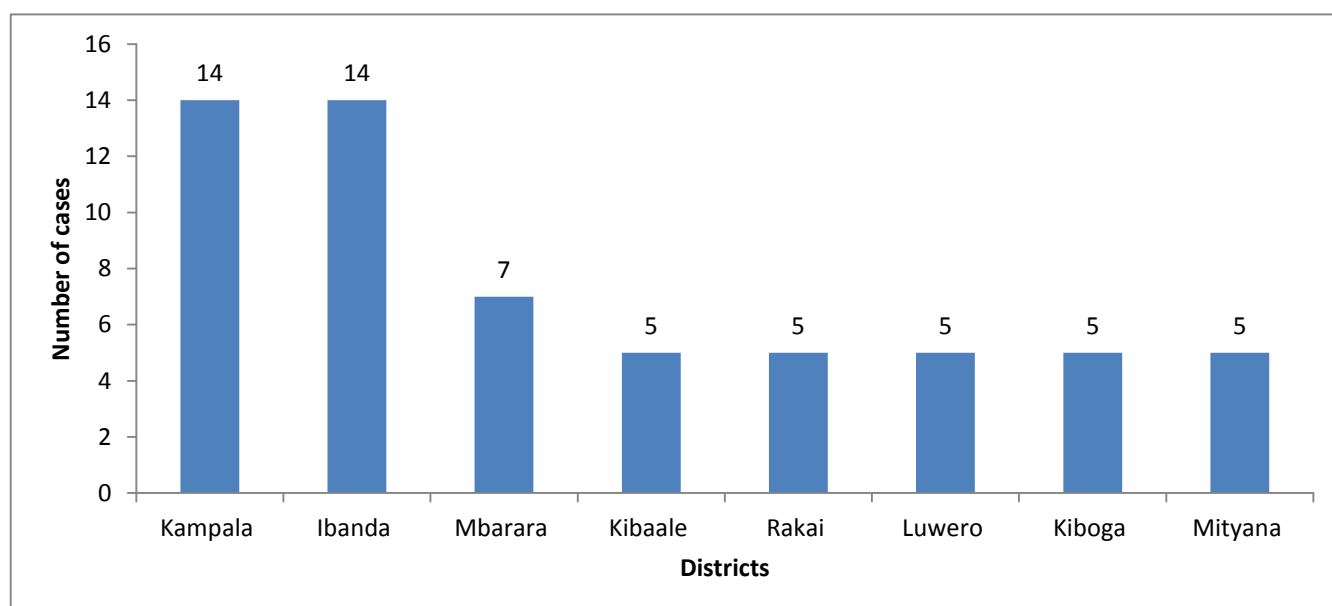
**AFP:** There were 4 cases of AFP reported this week with no death. These were from Butambala, Kaberamaido, Mukono and Pader districts that reported one case each.

**Typhoid fever:** The number of reported typhoid cases continues to be high. In week 49, there was a gradual decrease in the number of typhoid cases reported by 44.5% from that reported in week 48 with only 18 districts reporting 20 or more cases (**Figure 8**).



**Figure 8: Districts reporting typhoid cases above the threshold of 20 suspected cases in week 49, 2015**

**Measles:** Eight districts reported 5 or more suspected measles cases in week 49. Measles cases continue to appear despite the recent mass vaccination campaign (**Figure 9**). Ibanda and Kampala districts reported the highest number of cases (14 in both).



**Figure 9: Districts reporting 5 or more cases of measles in week 49, 2015**

**Maternal and perinatal deaths:** A total of 8 maternal deaths were reported from 6 health facilities (**Table 2**). This indicates a small decrease in the number of death as compared to the 13 cases in week 48. All facilities that reported deaths in week 49 have submitted the maternal audit forms, which are used to investigate the causes of death and in respective control interventions.

**Table 2: Reported maternal deaths in week 49**

Region	District	Sub county	Health facility	Maternal Deaths
Central	Masaka	Kimanya-Kyabakuza Division	Masaka RF HOSPITAL	3
Eastern	Bugiri	Bugiri Town council	Bugiri HOSPITAL	1
Eastern	Iganga	Iganga Central Division	Iganga HOSPITAL	1
Northern	Adjumani	Adjumani Town Council	Adjumani HOSPITAL	1

Western	Kyenjojo	Bufunjo Subcounty	Bufunjo HC III	1
Western	Hoima	Kahoora Division	Hoima RRF HOSPITAL	1

**Influenza in humans:** Three of the 19 samples collected from suspected Influenza patients and analysed by the weekly surveillance system at Makerere University Walter Reed Influenza Surveillance Project were positive for Influenza A (H1N1), A (H3) and Influenza B.

**Editorial:** Mr. J. Kissa, Dr. B. Masiira, Dr C.Kihembo, Joyce Nguna, Dr. M. Musenero, Mr. M. Mugagga, Dr. J. Wamala, Dr. I. Makumbi, Dr. R. Musoke, Dr. J. Sekajugo, Dr. F. Adatu, Dr. C. Okot, Dr. M. Nanyunja, Dr. I. Nabukenya

**Founders:** Dr. J. Kamugisha (RIP), Dr. J. Wanyana, Dr. M. Lamunu, Dr. C. Mugero, Dr. N Ndayimirigye, Mr. L. Luswa (RIP), Dr. N. Bakyaita, Mr. M. Mugagga

*For comments please contact: The Epidemiological Surveillance Division- M.O.H; P.O BOX 7272 Kampala, Tel: 0414-340874/0414-345108;  
Email: [esd@health.go.ug](mailto:esd@health.go.ug) or [esduganda@yahoo.co.uk](mailto:esduganda@yahoo.co.uk)*

# Summary table for epidemiological reports received for week 49 (30th Nov - 06th Dec 2015)

(Numbers in brackets indicate deaths)

District	% HU reporting	Malaria	Dysentery	AFP	Animal Bites	Bacterial Meningitis	Cholera	Guinea Worm	Measles	NNT	Plague	Typhoid Fever	Yellow Fever
Abim	60	274	8	0	1	0	0	0	0	0	0	0	0
Adjumani	91.4	3106(1)	32	0	2	0	0	0	0	0	0	0	0
Agago	70.6	1093	17	0	0	0	0	0	0	0	0	4	0
Alebtong	72.2	284	1	0	1	0	0	0	0	0	0	0	0
Amolatar	100	368	2	0	0	0	0	0	0	0	0	4	0
Amudat	50	78	1	0	0	0	0	0	0	0	0	0	0
Amuria	64.1	1823	2	0	7	0	0	0	0	0	0	0	0
Amuru	90.6	2760	6	0	2	0	0	0	0	0	0	3	0
Apac	56.8	2229(1)	0	0	0	0	0	0	0	0	0	0	0
Arua	75.3	3076	23	0	2	0	0	0	0	0	0	47	0
Budaka	93.8	1133	6	0	0	0	0	0	1	0	0	2	0
Bududa	73.3	809	9	0	4	0	0	0	0	0	0	3	0
Bugiri	74	2174	17	0	1	0	0	0	2	0	0	20	0
Buhweju	82.4	178	0	0	0	0	0	0	3	0	0	0	0
Buikwe	58.5	1711	6	0	4	0	0	0	2	0	0	26	0
Bukedea	81.3	574	4	0	0	0	0	0	0	0	0	4	0
Bukomansimbi	41.2	338	0	0	0	0	0	0	0	0	0	3	0
Bukwo	68.8	248	10	0	3	0	0	0	0	0	0	6	0
Bulambuli	78.9	660	0	0	0	0	0	0	0	0	0	0	0
Buliisa	100	470	1	0	0	0	0	0	0	0	0	3	0
Bundibugyo	90	2196	13	0	2	0	0	0	0	0	0	28	0
Bushenyi	71.8	884	3	0	1	0	0	0	4	0	0	8	0
Busia	75.9	1307	3	0	1	0	36	0	0	0	0	8	0
Butaleja	45.8	794	12	0	0	0	0	0	0	0	0	1	0
Butambala	60.9	321	2	1	0	0	0	0	0	0	0	3	0
Buvuma	9.1	14	0	0	0	0	0	0	0	0	0	0	0
Buyende	95.5	1566	1	0	1	0	0	0	0	0	0	2	0
Dokolo	100	723(1)	3	0	0	0	0	0	1	0	0	7	0
Gomba	78.9	465(1)	1	0	0	0	0	0	0	0	0	1	0
Gulu	75.6	5903	51	0	7	2	0	0	0	0	0	54	0
Hoima	35.3	1096(3)	18	0	4	0	0	0	3	0	0	8	0
Ibanda	58	1501	2	0	1	0	0	0	14	0	0	0	0
Iganga	57.1	2144(1)	2	0	3	0	0	0	1	0	0	8	0
Isingiro	81.4	2176	1	0	1	0	0	0	1	0	0	14	0
Jinja	41	2658(4)	11	0	9	0	0	0	3	0	0	5	0
Kaabong	77.8	1214	13	0	4	0	0	0	0	0	0	21	0
Kabale	78	554(6)	0		11	0	0	0	0	0	0	0	0
Kabarole	43.7	939	3	0	6	0	0	0	2	0	0	4	0
Kaberamaido	68	992	10	1	1	0	0	0	0	0	0	1	0
Kalangala	41.2	93	8	0	0	0	0	0	0	0	0	2	0
Kaliro	47.6	1162(1)	0	0	1	0	0	0	0	0	0	3	0
Kalungu	27.6	180	0		0	0	0	0	0	0	0	0	0

Kampala	25.4	1782	17	0	3	0	0	0	14	0	0	214	0
Kamuli	33.9	2247	3	0	4	0	0	0	0	0	0	7	0
Kamwenge	63	1990(1)	15	0	3	0	0	0	2	0	0	1	0
Kanungu	77.1	867	1	0	1	0	0	0	1	0	0	24	0
Kapchorwa	95	1055	16	0	0	0	0	0	0	0	0	3	0
Kasese	81.9	4149(2)	8	0	4	0	0	0	1	0	0	17	0
Katakwi	65.4	1039		0	0	0	0	0	0	0	0	0	0
Kayunga	46.4	1272	6	0	0	0	0	0	0	0	0	0	0
Kibaale	47.9	1294	4	0	7	0	0	0	5	0	0	97	0
Kiboga	73.3	336	4	0	3	0	0	0	5	0	0	12	0
Kibuku	86.7	430	1	0	0	0	0	0	1	0	0	0	0
Kiruhura	69.8	1811	1	0	9	0	0	0	3	0	0	10	0
Kiryandongo	57.7	947	1	0	0	0	0	0	0	0	0	2	0
Kisoro	89.5	194	2	0	0	0	0	0	3	0	0	8	0
Kitgum	53.6	1421	14	0	1	0	0	0	0	0	0	5	0
Koboko	100	1319	4	0	2	0	0	0	0	0	0	1	0
Kole	90.9	1925	2	0	1	0	0	0	0	0	0	0	0
Kotido	47.4	222	4	0	1	0	0	0	0	0	0	22	0
Kumi	66.7	1309	4	0	1	0	0	0	0	0	0	40	0
Kween	66.7	475	7	0	1	0	0	0	0	0	0	3	0
Kyankwanzi	76	842	0	0	0	0	0	0	0	0	0	11	0
Kyegegwa	100	1396	0	0	0	0	0	0	4	0	0	5	0
Kyenjojo	57.4	1230(1)	13(1)	0	9	0	0	0	3	0	0	9	0
Lamwo	85.7	2428	4	0	0	0	0	0	1	0	0	0	0
Lira	84.4	1366	13	0	3	0	0	0	1	0	0	19	0
Luuka	58.1	940	0	0	0	0	0	0	0	0	0	0	0
Luwero	64.9	996	4	0	5	0	0	0	5	0	0	13	0
Lwengo	29	562	3	0	0	0	0	0	1	0	0	15	0
Lyantonde	16.7	258	2	0	2	0	0	0	3	0	0	19	0
Manafwa	70.8	899	8	0	0	0	0	0	0	0	0	20	0
Maracha	100	1796	8	0	4	0	0	0	0	0	0	20	0
Masaka	30.8	628	7	0	2	0	0	0	3	0	0	8	0
Masindi	62.8	986	8	0	3	0	0	0	1	0	0	10	0
Mayuge	60.9	2393	11	0	1	0	0	0	3	0	0	2	0
Mbale	67.3	2002(1)	4	0	1	0	3	0	0	0	0	11	0
Mbarara	79.1	1072	33	0	10	2	0	0	7	0	0	23	0
Mitooma	66.7	1110	0	0	4	0	0	0	0	0	0	2	0
Mityana	54.2	1487(1)	4	0	9	0	0	0	5	0	0	3	0
Moroto	33.3	376	8	0	0	0	0	0	0	0	0	4	0
Moyo	100	3213	20	0	2	0	0	0	0	0	0	34	0
Mpigi	80	1004	3	0	0	0	0	0	0	0	0	3	0
Mubende	44.2	1922	135	0	4	1	0	0	2	0	0	61	0
Mukono	65.3	1668	8	1	5	0	0	0	0	0	0	17	0
Nakapiripirit	70.6	972(1)	43	0	2	0	0	0	0	0	0	14	0
Nakaseke	66.7	453	6	0	5	0	0	0	0	0	0	17	0
Nakasongola	51.4	418	7	0	4	0	0	0	0	0	0	1	0
Namayingo	50	1422	8	0	0	0	0	0	1	0	0	1	0
Namutumba	67.6	1138	1	0	0	0	0	0	0	0	0	2	0
Napak	78.6	1204	21	0	4	0	0	0	0	0	0	0	0



Nebbi	100	4460(5)	29	0	4	0	0	0	4	0	0	12	0
Ngora	83.3	303	1	0	0	0	0	0	0	0	0	0	0
Ntoroko	55.6	33	0	0	0	0	0	0	0	0	0	3	0
Ntungamo	34.1	1128	0	0	8	0	0	0	0	0	0	10	0
Nwoya	83.3	1230	0	0	1	0	0	0	0	0	0	0	0
Otuke	73.3	421	4	0	0	0	0	0	2	0	0	3	0
Oyam	74.2	2218(2)	1	0	15	0	0	0	0	0	0	8	0
Pader	43.6	755	9	1	0	0	0	0	0	0	0	5	0
Pallisa	57.6	1365(2)	3	0	0	0	0	0	0	0	0	2	0
Rakai	51.4	3217	15	0	0	0	0	0	5	0	0	16	0
Rubirizi	57.9	322	0	0	0	0	0	0	0	0	0	2	0
Rukungiri	52.8	842	1	0	5	0	0	0	2	0	0	2	0
Sembabule	58.3	835	5	0	1	0	0	0	0	0	0	53	0
Serere	85.7	1181	277	0	0	1(1)	0	0	0	0	0	0	0
Sheema	67.6	482	0	0	2	0	0	0	0	0	0	0	0
Sironko	60	1173	5	0	0	0	0	0	0	0	0	0	0
Soroti	66.7	2654(2)	10	0	6	0	0	0	1	0	0	37	0
Tororo	61.1	1080	5	0	1	0	0	0	0	0	0	8	0
Wakiso	30.3	1867	5	0	1	0	0	0	2	0	0	18	0
Yumbe	100	2797	8	0	10	0	0	0	0	0	0	4	0
Zombo	100	896(1)	12	0	3	0	0	0	0	0	0	2	0
<b>National</b>	<b>66.5</b>	<b>143792 (38)</b>	<b>1188 (1)</b>	<b>4 (0)</b>	<b>257 (0)</b>	<b>6 (1)</b>	<b>39 (0)</b>	<b>0 (0)</b>	<b>128 (0)</b>	<b>0 (0)</b>	<b>0 (0)</b>	<b>1298 (0)</b>	<b>0 (0)</b>

**Key:** Yellow: 100% reporting, Green: 80-99% reporting, Red: Below 80% reporting

HU= Health Units, AFP=Acute Flaccid Paralysis, NNT=Neonatal Tetanus, NR =Not Reported

**Compiled by the Epidemiological Surveillance Division, Ministry of Health**